

# HD Network Dome Camera

## Quick Guide

ver1.0.0



- Sony HD Image Sensor
- 3-Axis Bracket for Wall & Ceiling mount
- Triple Codec (H.264/MPEG4/MJPEG)
- Triple Stream
- Support Onvif
- Support POE

## 1 Safety Caution

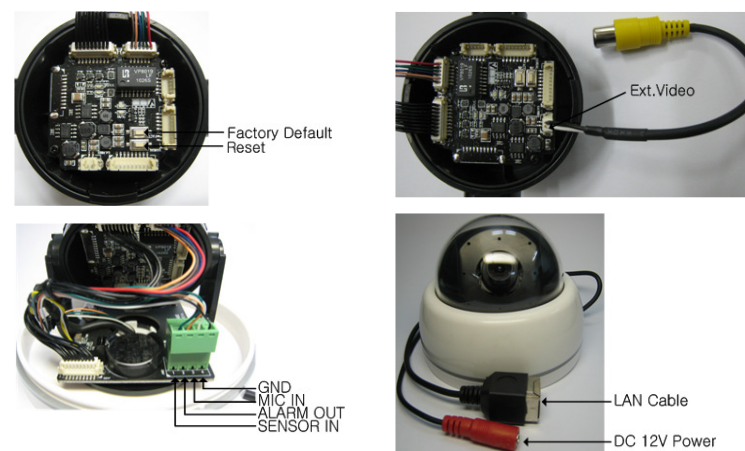
- 1) This camera may be damaged by electrical and shock. Use regulated DC12V, 300mA over Power supply or POE. Do not throw or drop it onto floor.
- 2) Do not install the camera outdoors
- 3) In case it is installed at high location, be sure to mount securely to prevent the unit from falling below.
- 4) In case the unit fails, DO NOT try to disassemble the product. Contact or consult the distributor or an authorized technician for after-sales service. Warranty void for the product disassembled without an authorization from the distributor or an authorized technician.
- 5) All responsibility by using this unit is on the user.

## 2 Package



- 1) HD Network Dome Camera
- 2) Quick Guide
- 3) Ext. Video Cable
- 4) EXT. I/O Connector
- 5) Opener

## 3 Interface



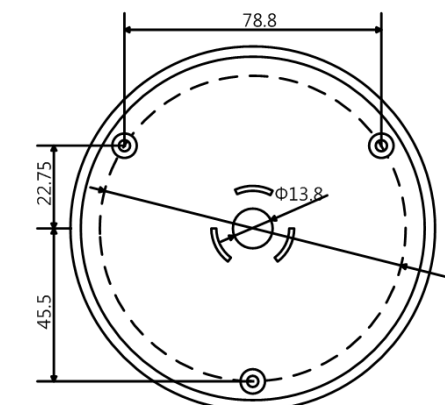
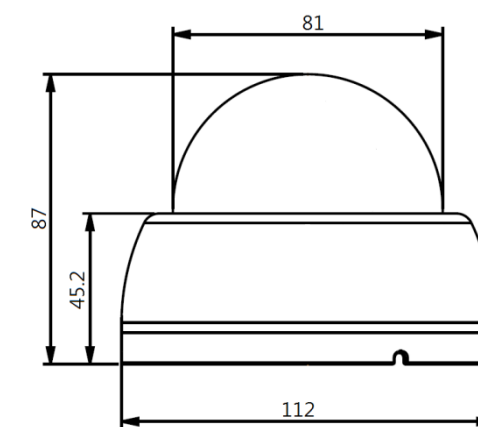
## 4 IP Initialization

Factory Default	IP Address	192.168.1.30
	Gateway	192.168.1.1
	Subnet mask	255.255.255.0
	I D	admin
	Password	admin
	Web Port	80
	RTSP Port	554

\* You should change the ID and Password after purchasing.

\* You will be responsible for all the damages unless you change the ID and Password .

## 5 Dimension



## 6 Specification

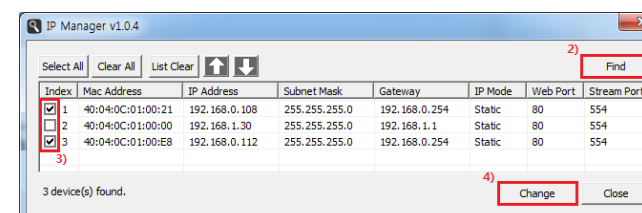
CAMERA SECTION		
IMAGE	Image Sensor	Sony HD Image Sensor
	Size	1/3" inch
	Scan System	Progressive Scan
	Total Pixels	1384(H)×1076(V) 1.49MegaPixles
	Effective Pixels	1329(H)×1049(V) 1399MegaPixles
Function	Day & Night	Auto/Day(Color)/Night(BW)
	Privacy Area	On/Off (6 Programmable Zone)
	WDR	DWDR (1~5Step)
	Motion Detector	48 Zone (On/Off, 1~5Step)
	Elec. Shutter	Auto(1/15~1/10000), Suppress Rolling, Manual
	Sense Up	Auto(1~6Step), On/Off
	White Balance	Auto/Indoor/Outdoor/Fluorescent
Lens	Ext. Video	VBS1.0Vp-p
	Focal Length	3.73mm
	F.#	F#1.8
Electrical	View Angle	80.2°(H), 58.6°(V)
	Mount Type	Board Mount Type
	Power Supply	DC12[V] ±10% / POE
Environme ntal	Current	Max 250[mA]
	Operating Temp.	-10°C ~ +50°C
	Preservation Temp.	-20°C ~ +60°C
Mechanical	Humidity	0% ~ 90%
	Dimension	Φ80mm × 87mm(H)
	Weight	400 [g]

NETWORK SECTION		
System	OS	Embedded Linux
Network	Interface	RJ45 100/100 Base-T PoE
	Protocol	TCP/IP,UDP/IP,RTSP,RTSP,RTCP,NTP, HTTP,DHCP,FTP,SMT, DNS,DDNS
	Onvif	ver2.0
	DDNS	iplinker.net
	Simultaneous Access	Max. 10 user
	Compress Format	H.264/MPEG4/MJPEG
Video	Resolution	1280×1024/1280×960/1280×720 /1024×768/640×480/320×240
	Frame rate	5fps ~ 30fps @ all resolution
	Video Quality	H.264,MPEG4 : Bitrate Control MJPEG : Quality Level Control
	Streaming	Triple Stream (Stream1,2,3) RTP/RTSP, UnicastRTP, Multicast RTP
Audio	Compress Format	G.711 u-law
	Streaming	One way
Event	Sensor In	1 (Digital Input)
	Alarm Out	1 (Digital Outut, Open Collector)
Web	Manager	IE, Firefox, Safari, Opera
	Viewer	IE only (Active-X)

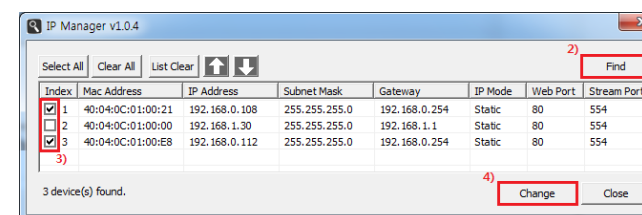
## 7 IP Manager

You can do all the settings about network by IP Manager.

- 1) Run IP Manager
- 2) Click Find
- 3) Choose the cameras you want to change
- 4) Click Change

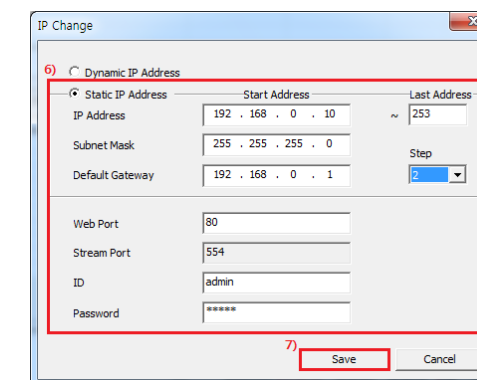


- 5) Click Batch

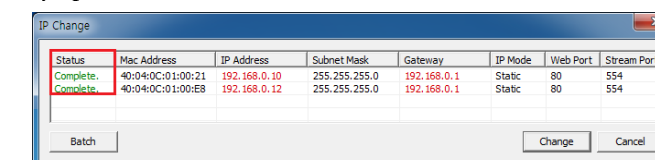
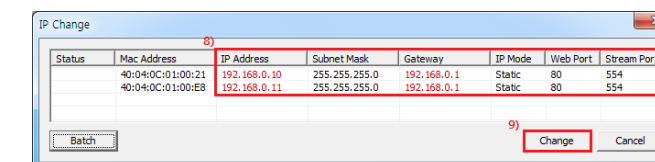


- 6) If you want to change many IP addresses, you can enter the starting IP address and the ending IP address, and enter each increasing step.
- 7) Click Save

- 8) Confirm if the changing values are correct.
- 9) Click Change



- 10) Check the Status
- 11) Try again for the failed cameras



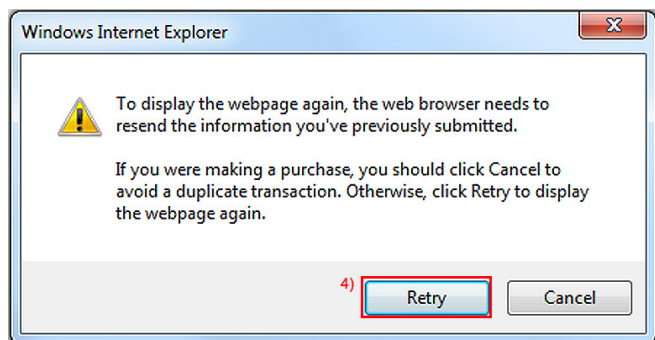
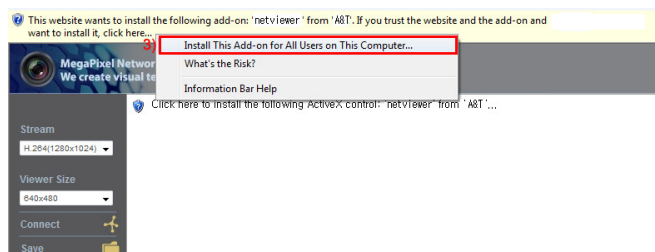
## 8 Web Viewer

You can connect the web server inside the camera and check the picture. First enter the address on internet explorer.

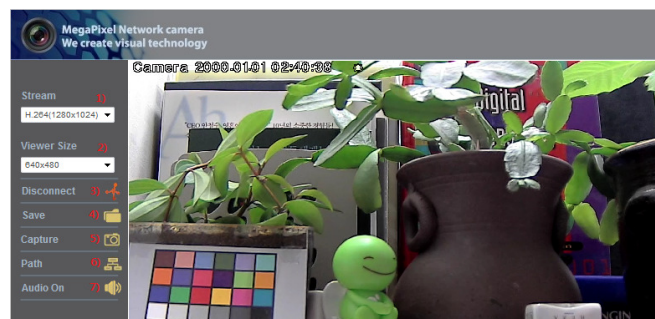
- 1) Enter ID / Password
- 2) Click Viewer



### Install Active-X



### Web viewer functions



- 1) Stream : Choosing stream, displaying the status of chosen stream
- 2) Viewer Size : Choose the size of window
- 3) Disconnect : Disconnect the camera
- 4) Save : Record the current moving picture in AVI file format.
- 5) Capture : Save the current still picture in BMP file format.
- 6) Path : Choose the directory to Save, Capture
- 7) Audio On : Turn On/Off Audio  
Audio should be On at setting.

## 9 Web Manager

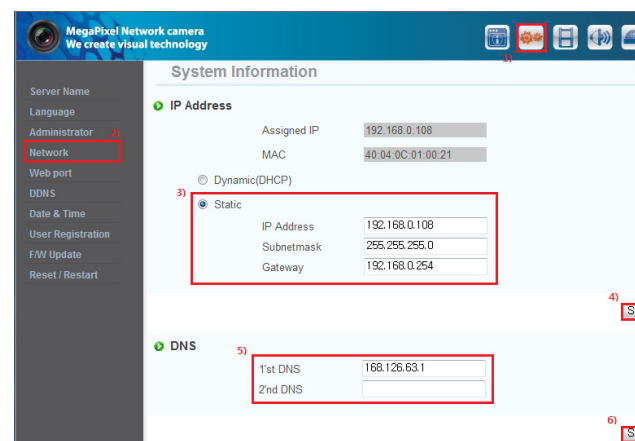
You can control all the functions through Web Manager log on. When you use, you should change ID and Password and don't open for safe use.

- 1) Enter ID / Password
- 2) Click Manager



### Check the network setting and change

When it is working fine under LAN condition, but not working under WAN, and the camera cannot receive the correct time from NTP server,

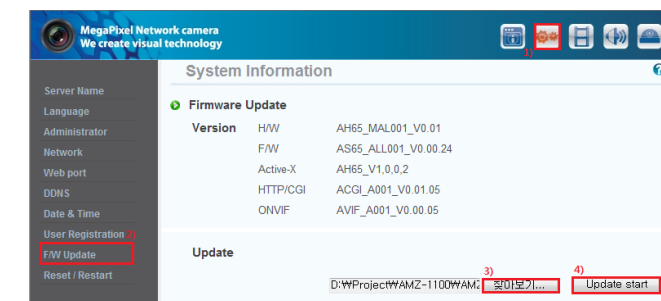


### How to update the firmware

Update is needed to improve the functions and quality.

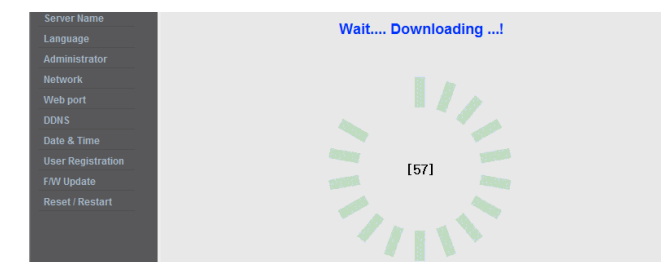
- 1) Click the find and choose the update file.
- 2) Click Update start and wait until Wait Downloading appears.

\* Don't click any buttons when you are waiting.



- 3) Wait until Update completed

\* Don't click any buttons when it is being updated.



- 4) After Update completed, click Restart

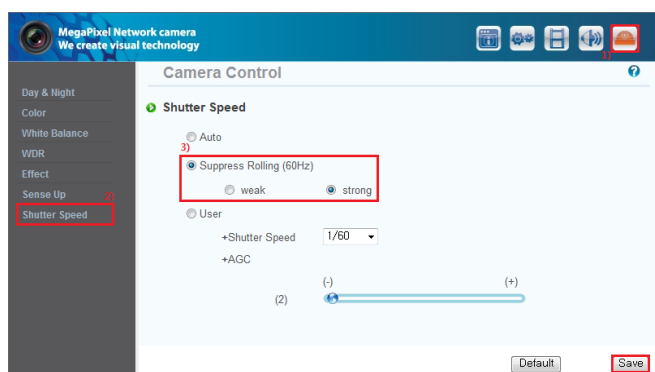
## 8 Web Viewer

### Suppress rolling



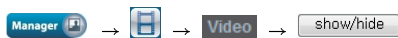
If there is a rolling picture under lighting, you can use this Suppress Rolling function.

If you choose "Strong" on Suppress Rolling function, electric shutter will be fixed at 1/15 ~ 1/120 sec. you should be careful when you use it under bright lighting. Click Help ( ? ) for more details.



## 9 Web Manager

### Frame rate / Bit rate adjustment



Refer to below bit rate and frame rate example for your easier understanding.

Current Status

Frame Rate : 30[fps]  
Bit Rate : 4000[Kbps]

Case 1

Frame Rate 15[fps]  
Bit Rate 4000[Kbps]

The pictures transferred per 1 sec. is decreased from 30 to 15.  
The data size transferred per 1 sec. is maintained on 4000[Kbps]  
Picture quality will be better, and network load will be same.

Case 2

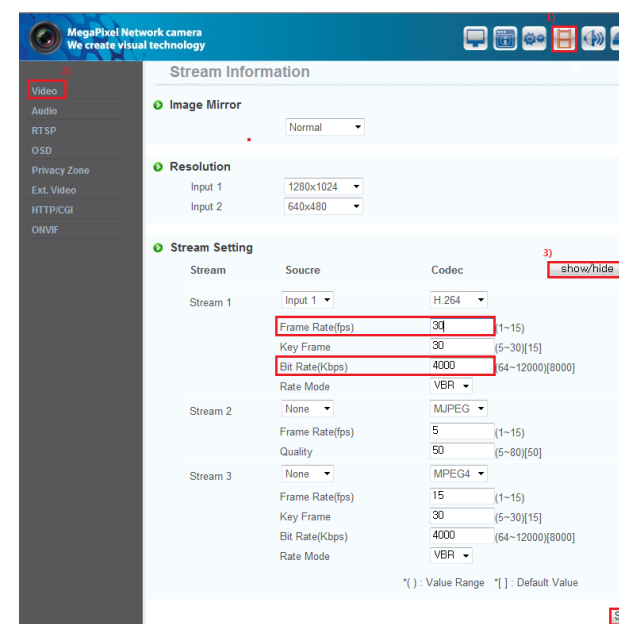
Frame Rate 30[fps]  
Bit Rate 2000[Kbps]

The pictures transferred per 1 sec. is maintained on 30.  
The data size transferred per 1 sec. is decreased from 4000[Kbps] to 2000.  
Picture quality will be worse and network load will be decreased from 4000[Kbps] to 2000, by half.

Case 3

Frame Rate 15[fps]  
Bit Rate 2000[Kbps]

The pictures transferred per 1 sec. is decreased from 30 to 15.  
The data size transferred per 1 sec. is decreased from 4000[Kbps] to 2000. Picture quality is same, network load will be decreased from 4000[Kbps] to 2000, by half.  
Therefore you should change both frame rate and bit rate.



### HOW TO SET WDR



If you want to watch the more clear image under back light condition, you can do setting as below, and choose the step and click Save.

\* You should check the pictures after click the Save button.

